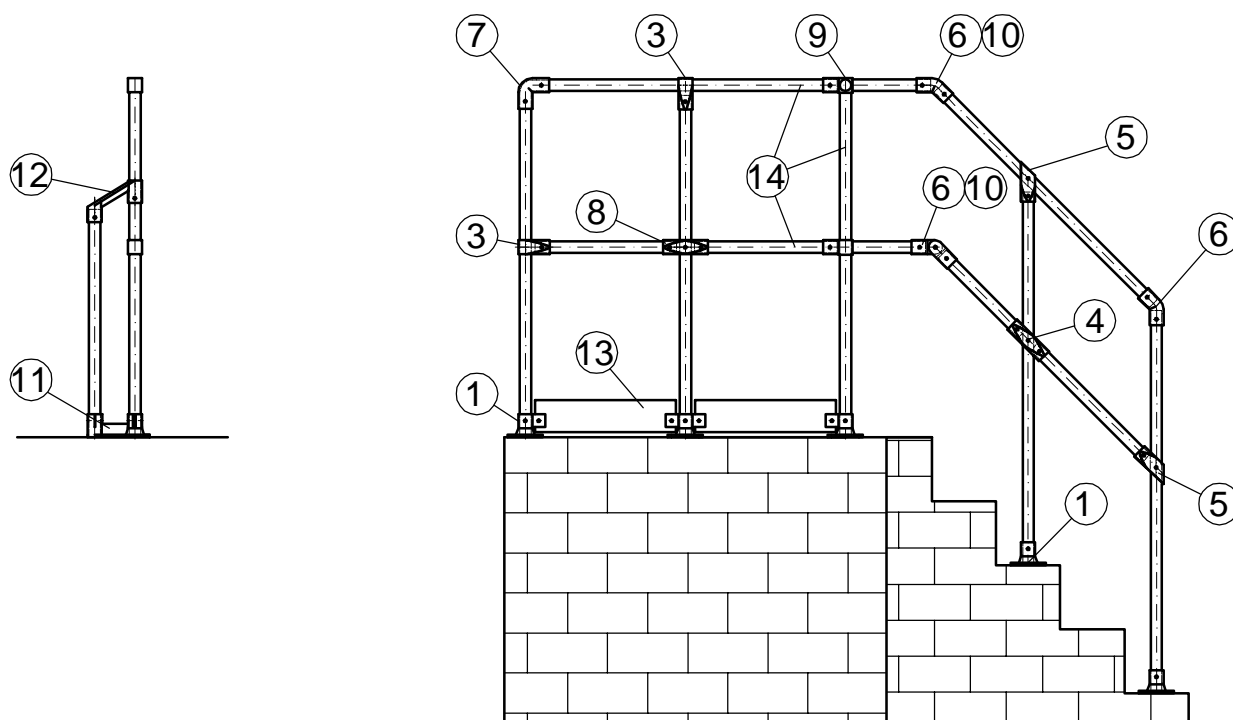
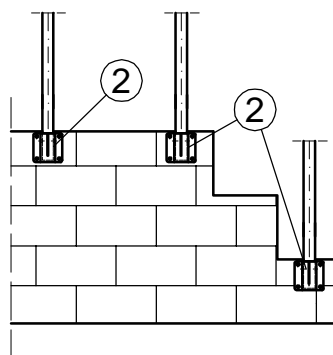
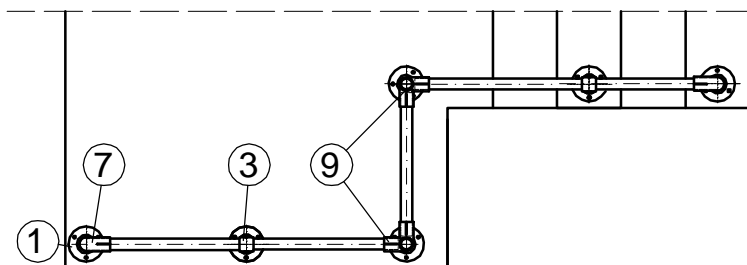


# Elementy łączące barierek ochronnych System EAWO



1. EAWO - 98.01
2. EAWO - 98.02
3. EAWO - 98.03
4. EAWO - 98.05
5. EAWO - 98.06
6. EAWO - 98.07
7. EAWO - 98.08
8. EAWO - 98.10
9. EAWO - 98.11
10. EAWO - 98.12
11. EAWO - 98.13
12. EAWO - 98.14
13. Bortnica
14. Poręcz lub słupek



**PRODEKO - EŁK Sp. j**

19-300 Elk, ul. Strefowa 9

Tel.: 087/620-06-02,

Fax.: 087/620-06-01